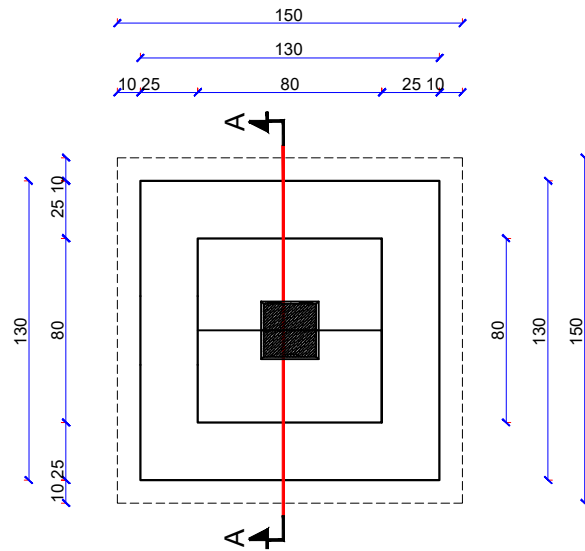
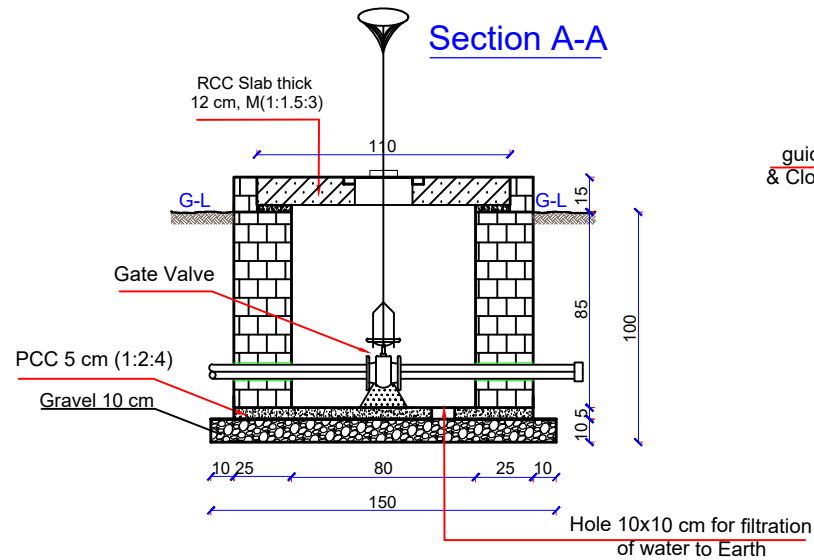


Design and Details of Gate Valve Box

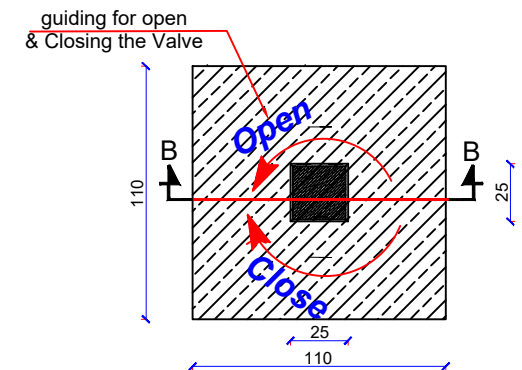
Plan of Gate Valve Box.



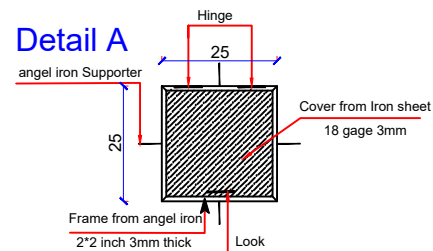
Section A-A



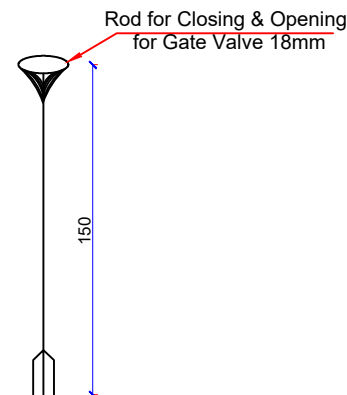
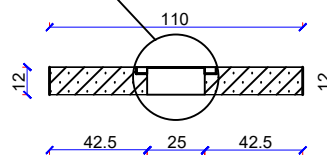
Plan of Slab



Detail A



Section B-B



Note: All dimension are in Cm.



SURVEYED BY Eng. M Hashim Omid& Jawid Naseri
DESIGNED BY Eng. M Hashim Omid
DRAWN BY Eng. M Hashim Omid

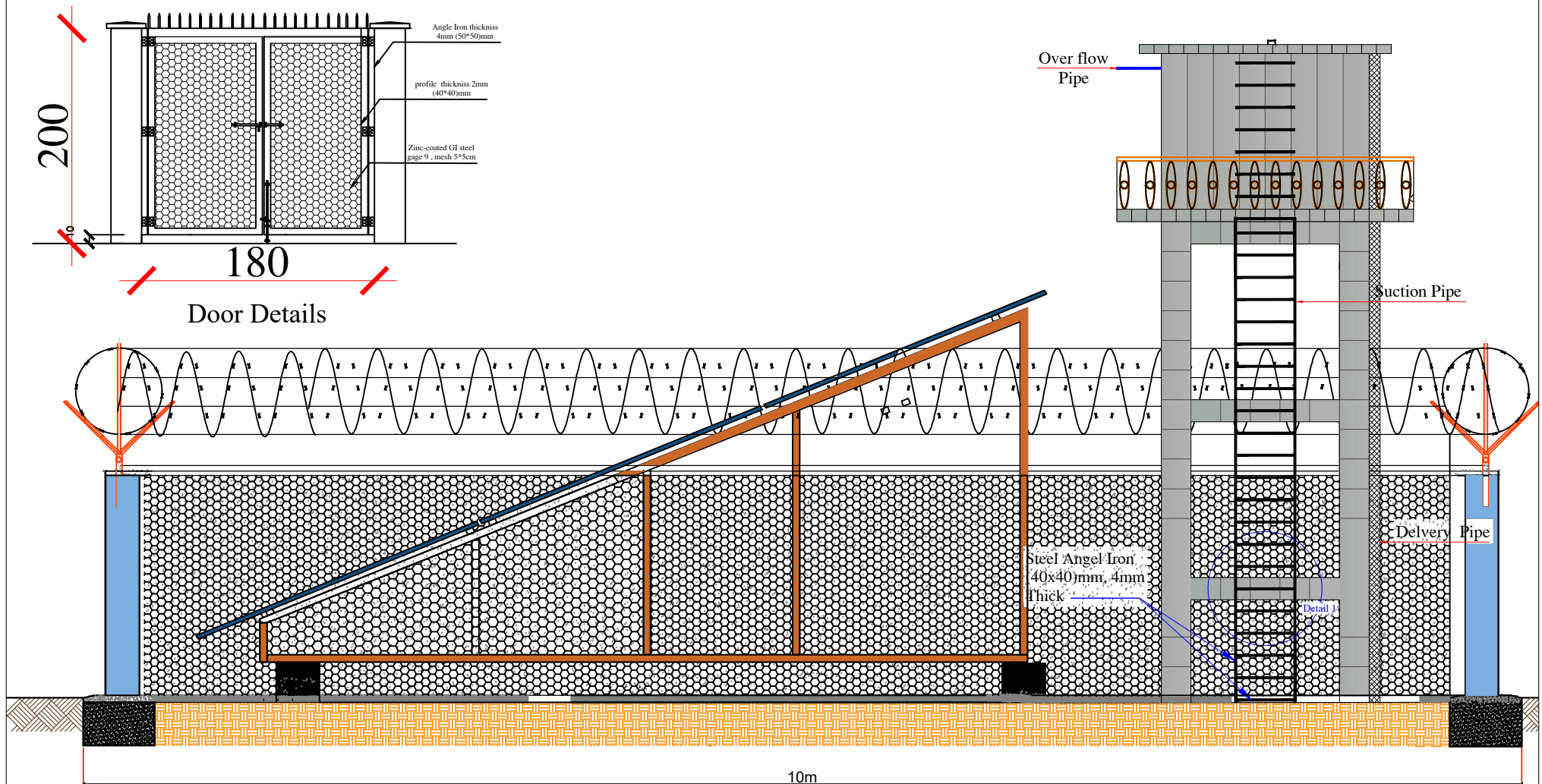
CHECKED BY Eng. M Nasim Yousafzai
REVIEWED BY Eng. M Nasim Yousafzai
APPROVED BY Eng. M Nasim Yousafzai

SCALE
DATE 25/March/2026
DRAWING NO

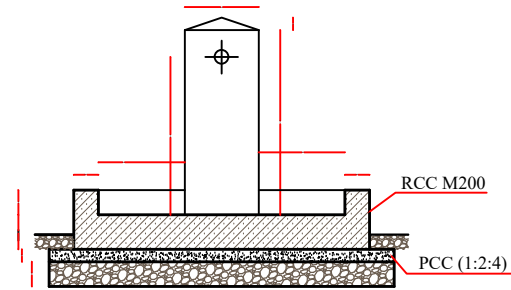
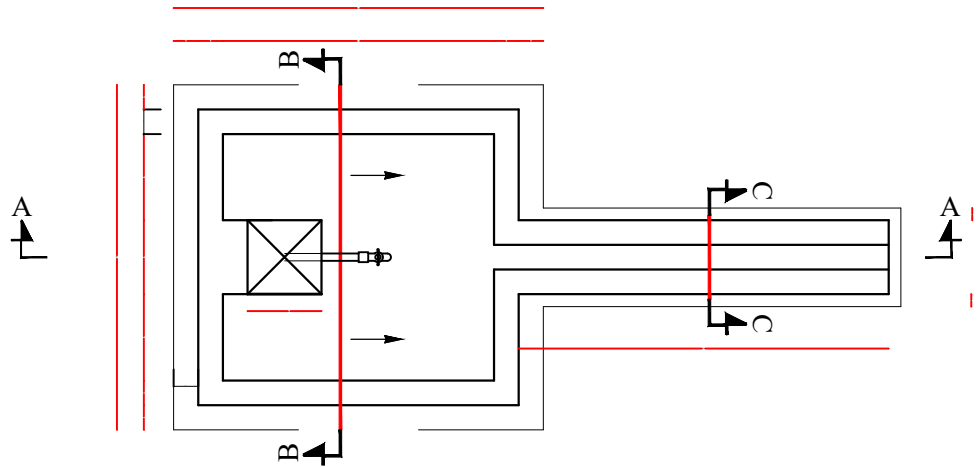
SHEET NO
1/1

PROVINCE Sar e Pol
DISTRICT Sayad & SRP Center
VILLAGE Sayad & SRP Center

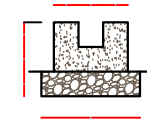
PROJECT NAME: water supply network
DRAWING TITLE: Hydraulic system



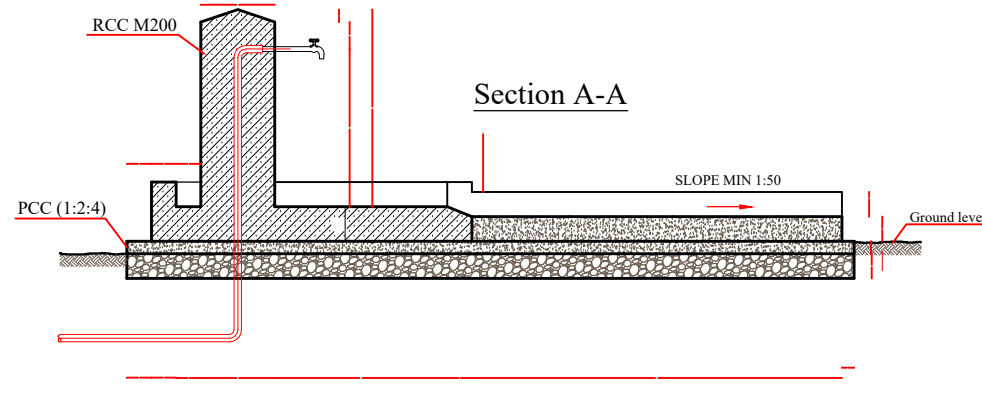
Public Stand Tap



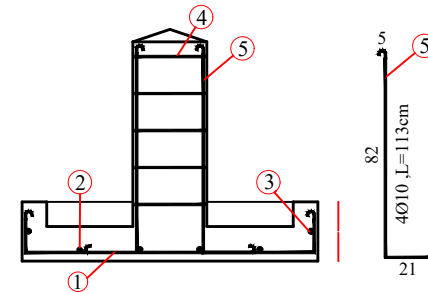
Section B-B



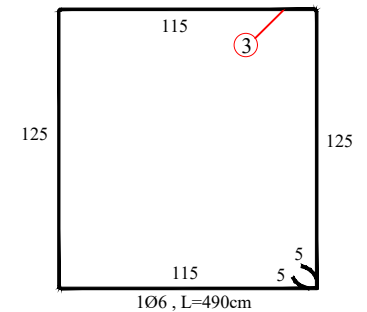
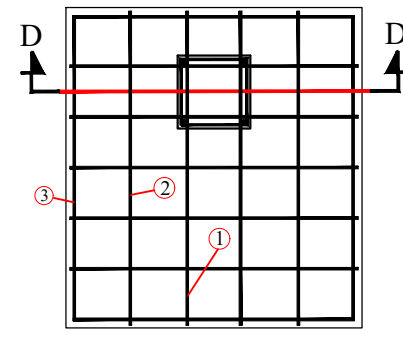
Section C-C



Section A-A



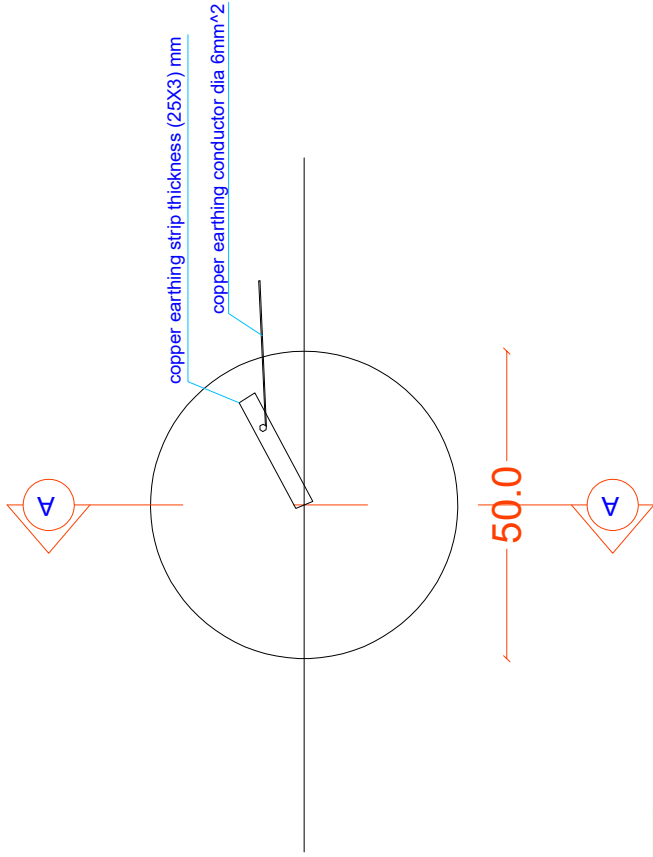
Section D-D



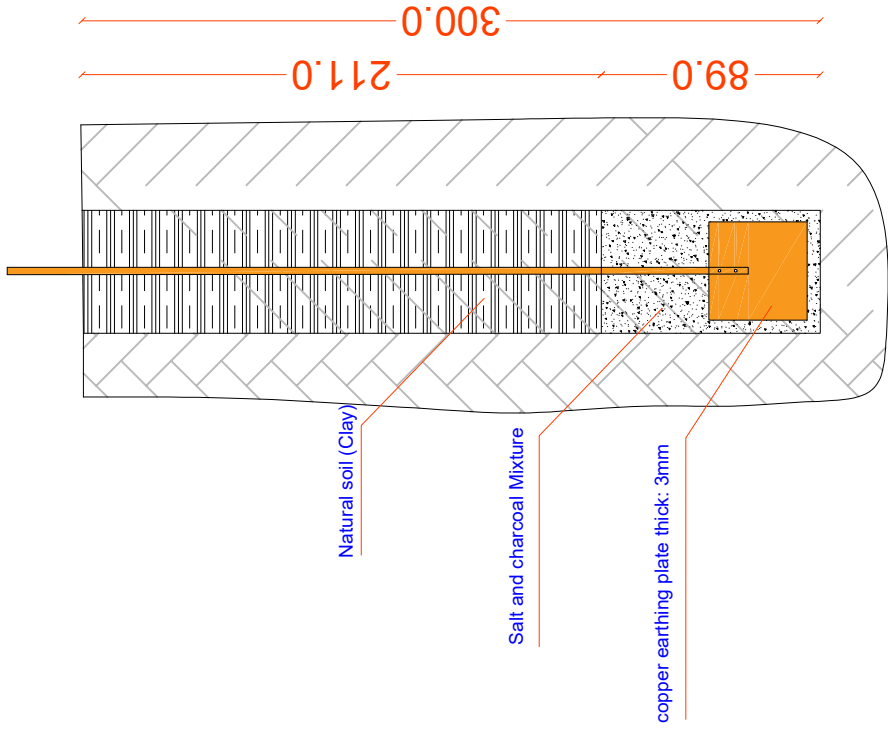
STEEL BAR SCHEDULE FOR 40 CUBIC METER RCC WATER RESERVOIR

Shape of bar	Bar No	Bar Dia (mm)	Number of Bar	Total Number	Length (m)	Total Leng (m)	Weight (kg/m)	Total weight (kg)	Total weight +5% (kg)
	1	6	1x5	5	1.6	8	0.222	1.78	1.86
	2	6	1x4	4	1.71	6.84	0.222	1.52	1.59
	3	6	1x1	1	4.9	4.9	0.222	1.1	1.14
	4	10	1x4	4	1.13	1.13	0.617	2.8	2.93
	5	6	1x5	5	1.18	1.18	0.222	1.3	1.38
Total Weight of Steel Bar +5% (Kg)								8.9 kg	

NOTE: All dimensions shown on this drawing
in centimeters (Cm) unless
otherwise specified.



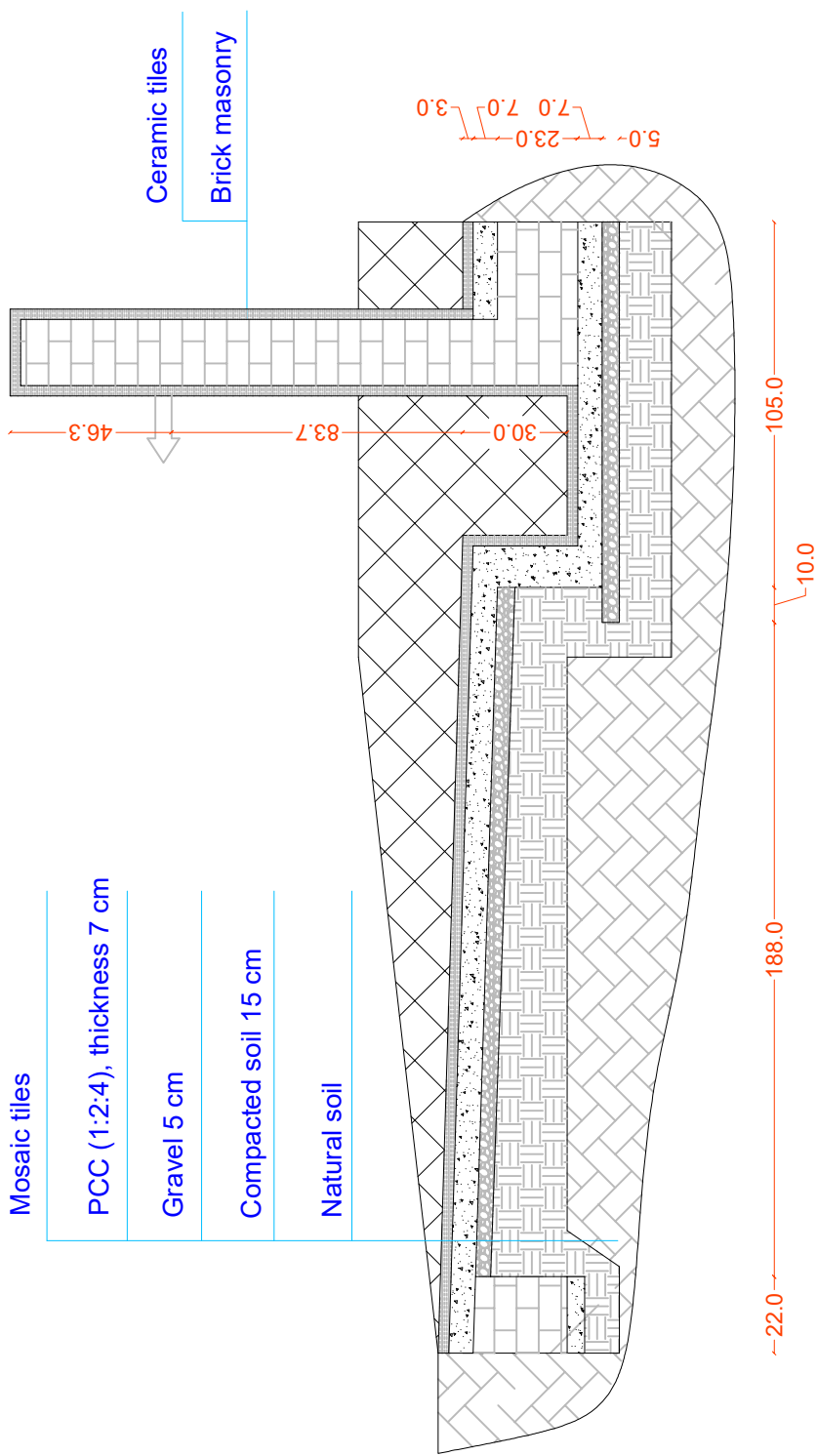
PLAN



Section : A

 Save the Children	Surveyed By	Eng. M Hashim & Jawid	Checked By	Eng. M Nasim Yousofzai	Scale		Sheet NO	Province	Sar e pol	Project Name:	
	Designed By	Eng. M Hashim Omid	Reviewed By	Eng. M Nasim Yousofzai	Date	27/4/2026	1	District	SRP center, Sayad	water supply Network	
	Drawing By	Eng. M Hashim Omid	Approved By	Eng. M Nasim Yousofzai	Drawing No			Village		Drawing Title :	
										Earthing Pit Plan	

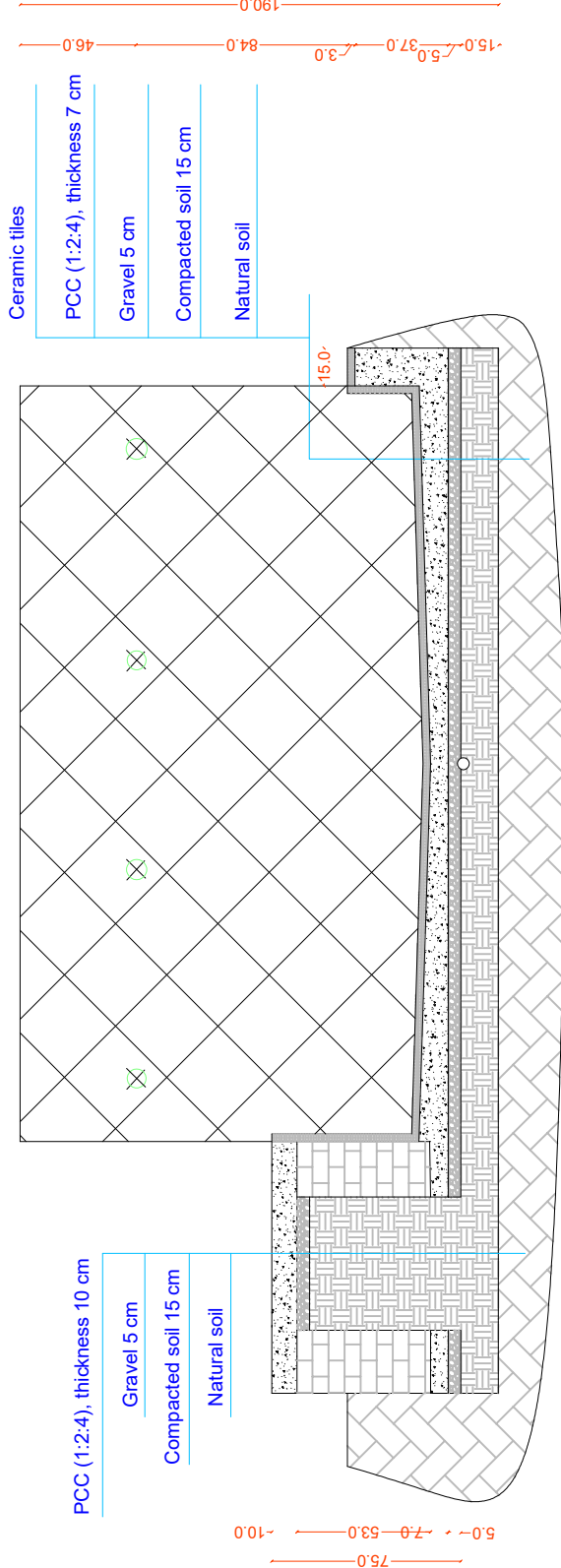
NOTE: All dimensions shown on this drawing
in centimeters (Cm) unless
otherwise specified.



Section : A

	Surveyed By	Eng. M Hashim & Jawid	Checked By	Eng. M Nasim yousofzai	Scale		Sheet NO	Province	Sar e pol	Porject Name: water supply Network	
	Designed By	Eng. M Hashim Omid	Reviewed By	Eng. M Nasim yousofzai	Date	27/4/2026	2	District	SRP center, Sayad	Drawing Title :	
	Drawing By	Eng. M Hashim Omid	Aproved By	Eng. M Nasim yousofzai	Drawing No			Village		Tap station	

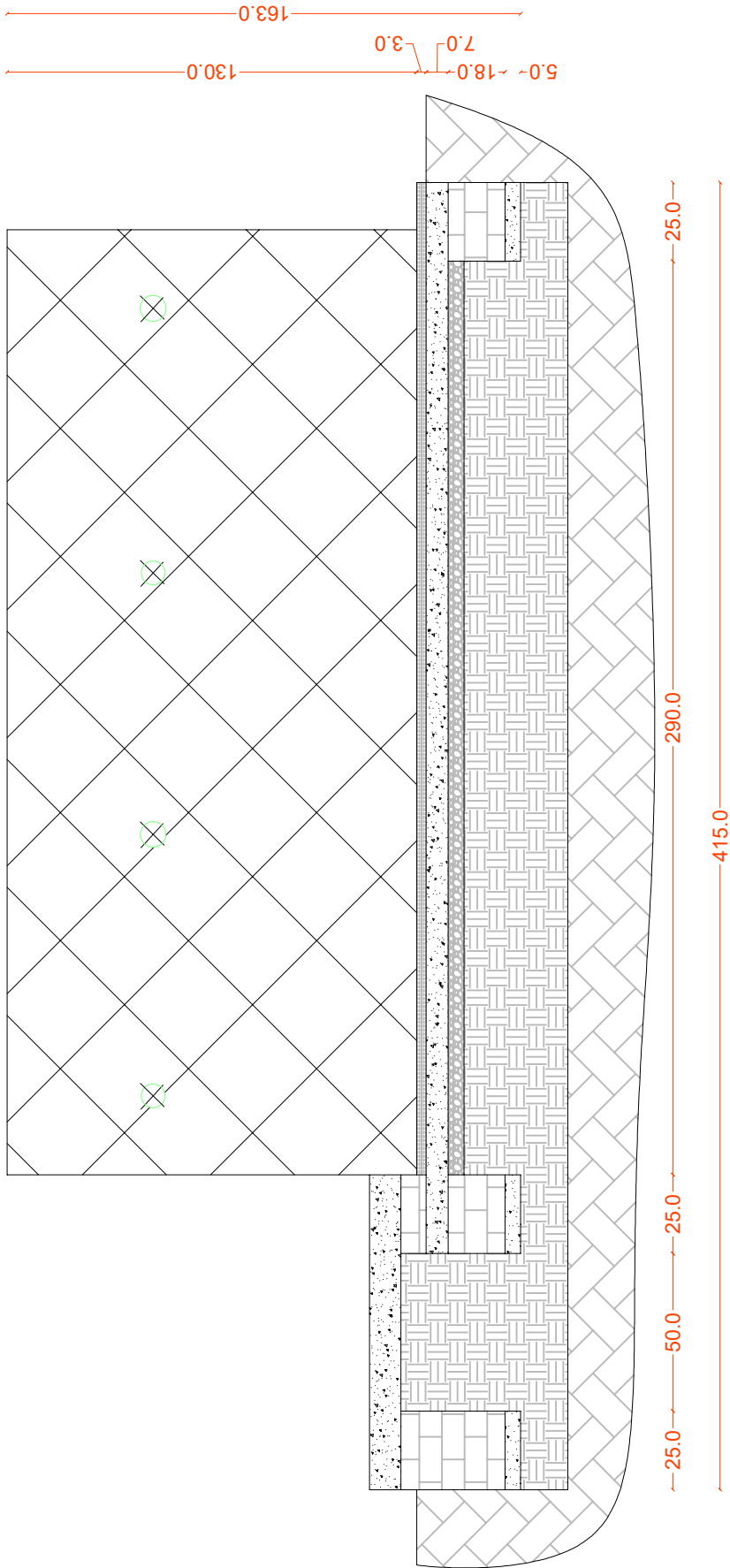
NOTE: All dimensions shown on this drawing
in centimeters (Cm) unless
otherwise specified.



Section : B

	Surveyed By	Eng. M Hashim & Jawid	Checked By	Eng. M Nasim yousofzai	Scale	Sheet NO	Province	Sar e pol	Porject Name: water supply Network	
	Designed By	Eng. M Hashim Omid	Reviewed By	Eng. M Nasim yousofzai	Date	3	District	SRP center, Sayad	Drawing Title :	
	Drawing By	Eng. M Hashim Omid	Aproved By	Eng. M Nasim yousofzai	Drawing No		Village		Tap Station	

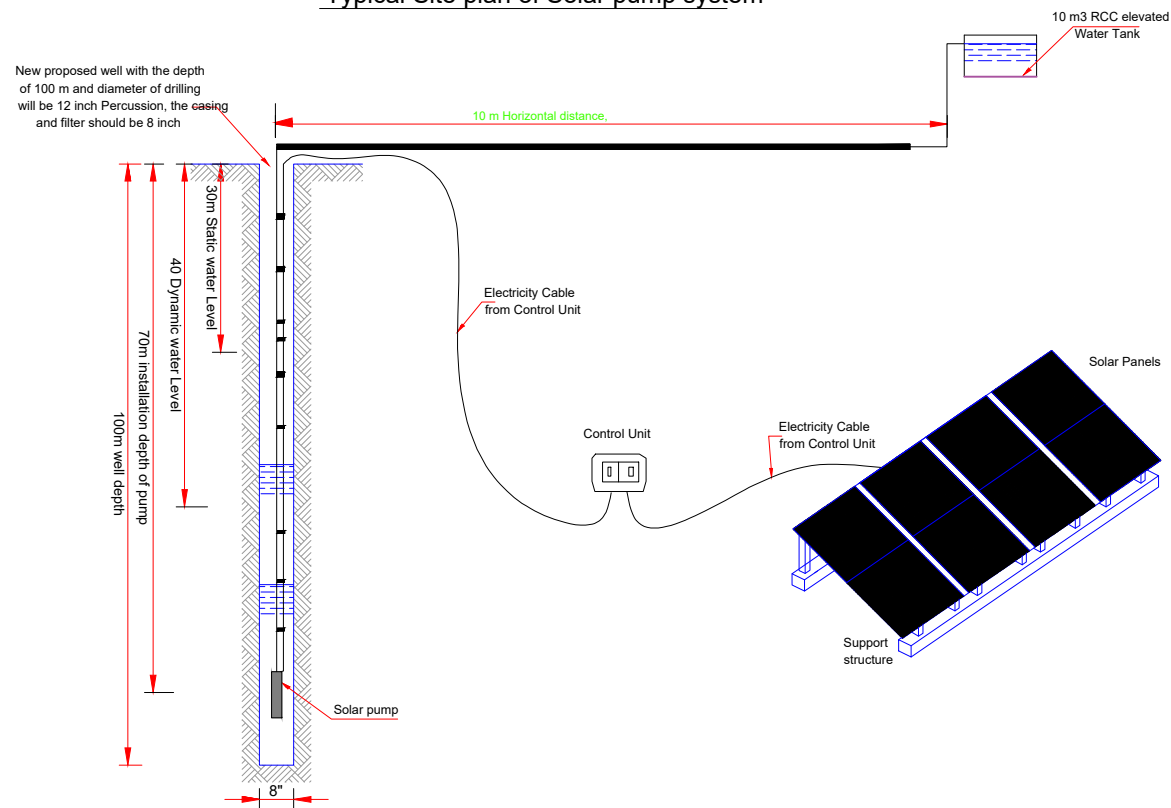
NOTE: All dimensions shown on this drawing
in centimeters (Cm) unless
otherwise specified.



Section : C

<div>Save the Children</div>	Surveyed By	Eng. M Hashim & Jawid	Checked By	Eng. M Nasim yousofzai	Scale		Sheet NO	Province	Sar e pol	Perfect Name: water supply Network	
	Designed By	Eng. M Hashim Omid	Reviewed By	Eng. M Nasim yousofzai	Date	27/4/2026	4	District	SRP center, Sayad	Drawing Title :	
	Drawing By	Eng. M Hashim Omid	Aproved By	Eng. M Nasim yousofzai	Drawing No			Village		Tap Station	

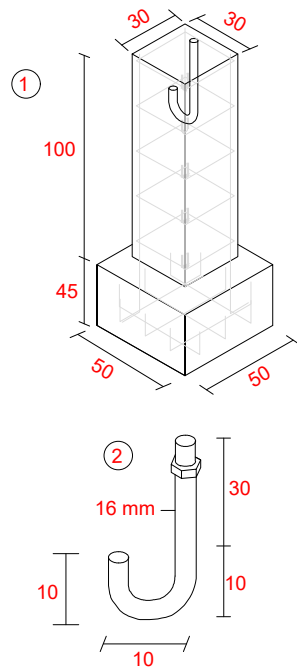
Typical Site plan of Solar pump system



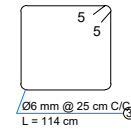
	SURVEYED BY	Eng. M Hashim Omid & Jawid Naseri	CHECKED BY	Eng. M Nasim Yousafzai	SCALE		<div>1/3</div>	PROVINCE	Sar e Pol	PROJECT NAME:	Sayad and SRP Center water supply network
	DESIGNED BY	Eng. M Hashim Omid	REVIEWED BY	Eng. M Nasim Yousafzai	DATE	28/March/2026		DISTRICT	Sayad and SRP Center	DRAWING TITLE:	Hydraulic system
	DRAWN BY	Eng. M Hashim Omid	APPROVED BY	Eng. M Nasim Yousafzai	DRAWING NO.			VILLAGE	Sayad and SRP Center		

Note:

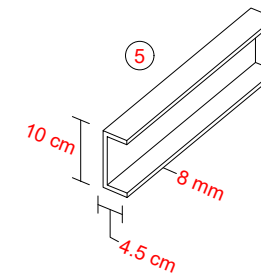
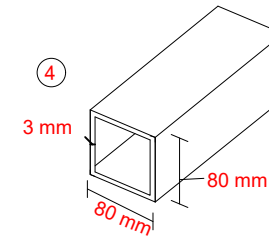
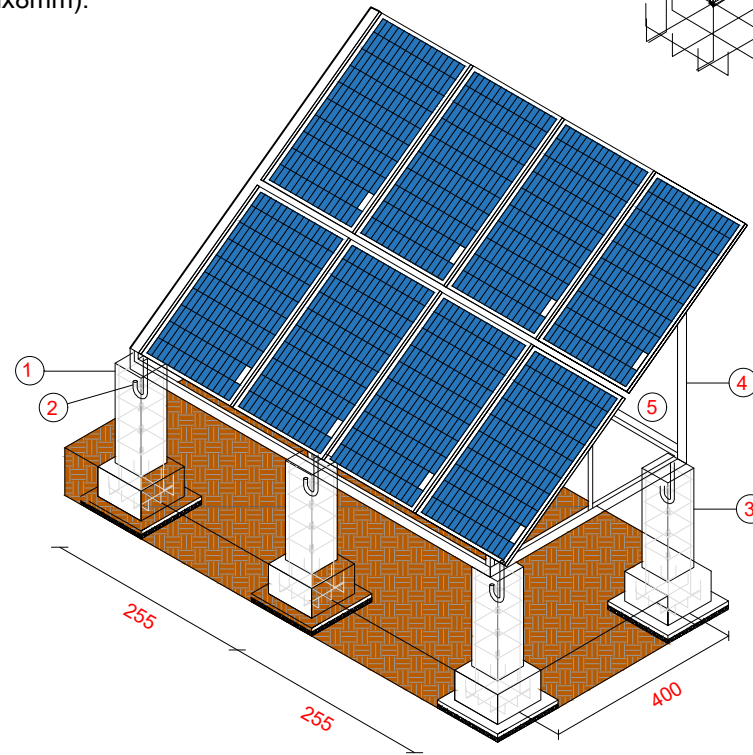
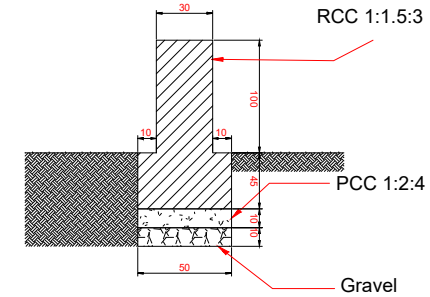
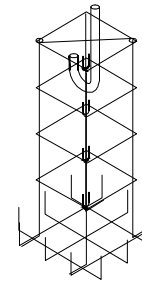
- 1-RCC Concrete Footing and Column M(1:1.5:3).
- 2-J-Anchor Bolt 16mm.
- 3-Deformed Grade 60 steel bar Dia.10mm according to drawing.
- 4-Steel angle iron (2"x2"x4mm).
- 5-Steel girder mini. sizing (10cmx4.5cmx8mm).
- PCC M(1:2:4).
- Foundation Compacted 95%.
- Potable water used.

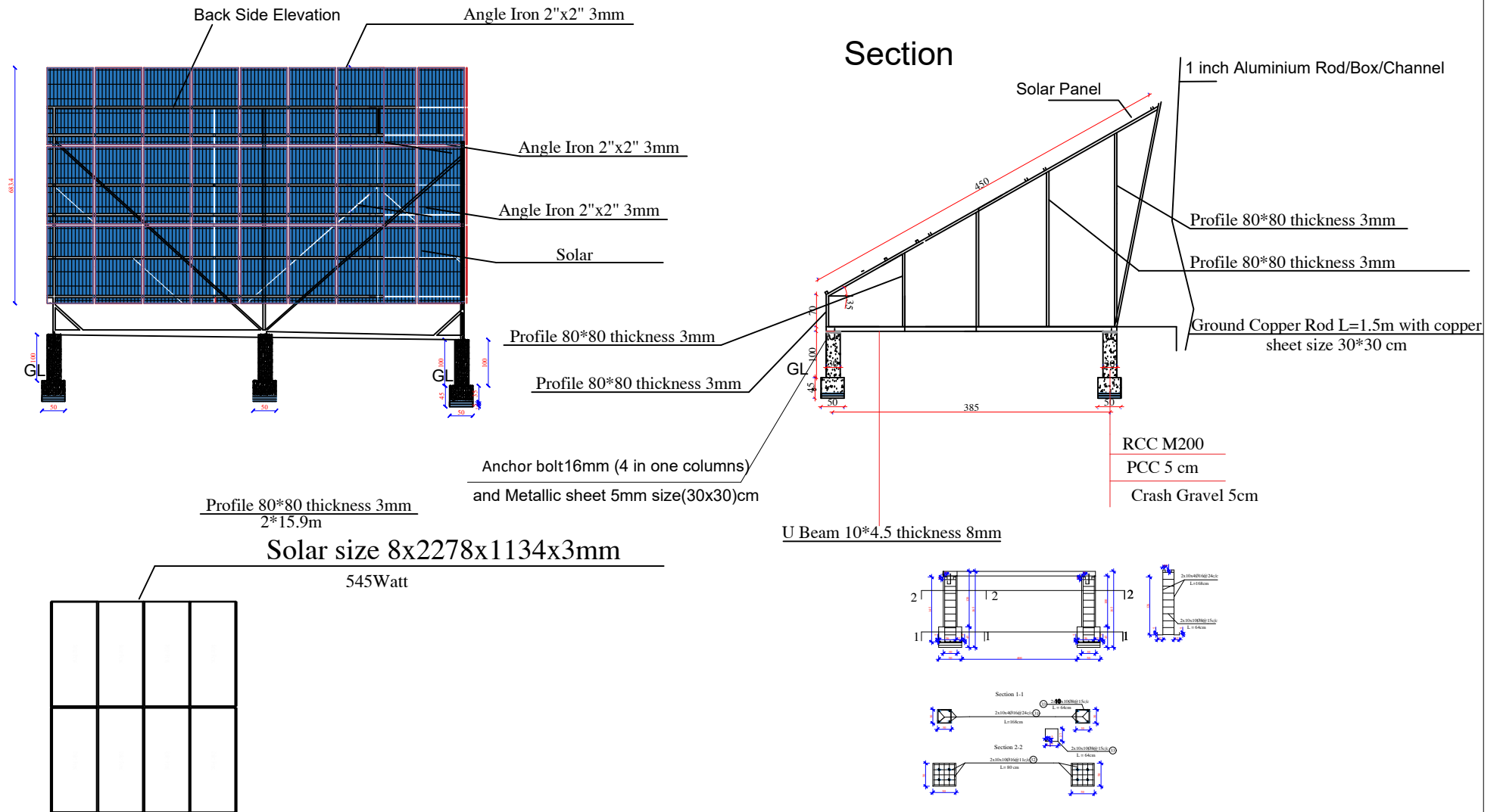


Column Stirrup



















3


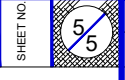




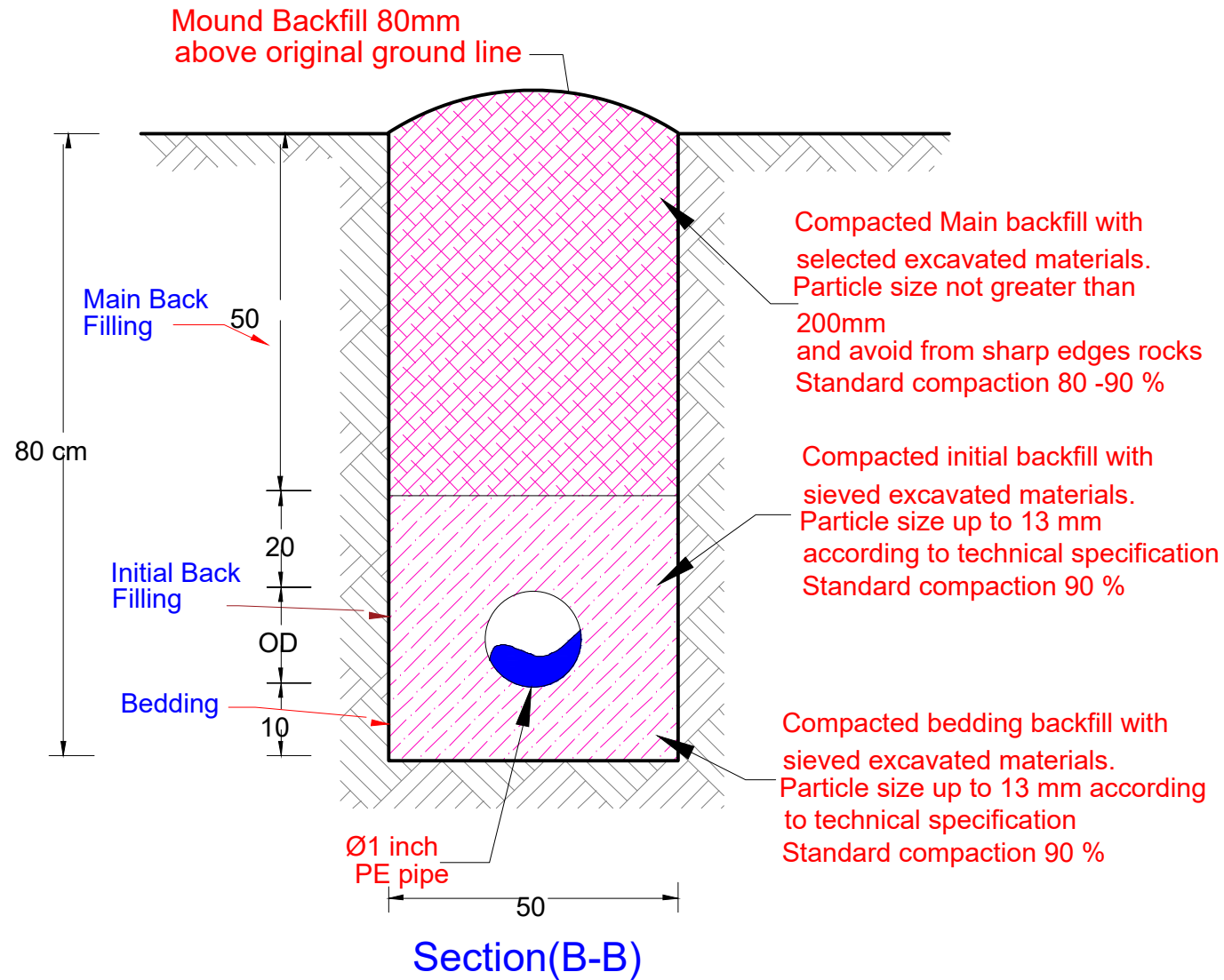
STEEL BAR SCHEDULE FOR 10 CUBIC METER RCC Elevation WATER Tank

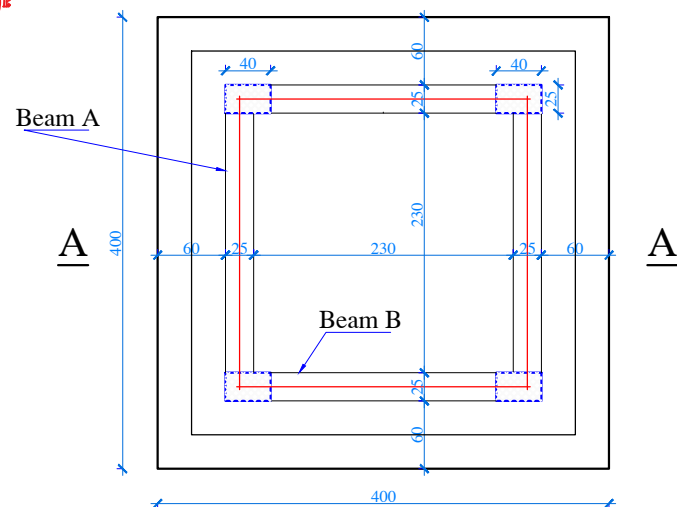
Shape of bar	Bar No	Bar Dia (mm)	Number of Bar	of Total Number	Length (m)	Total Length (m)	Weight (kg/m)	Total weight (kg)	Total weight +5% (kg)
	1	18	3	3	1.4	4.2	1.998	8.4	8.8
	2	8	8x2	16	0.75	12	0.4	4.8	5.04
	3	12	4x40	160	4	640	0.888	568.32	596.74
	4	12	4x15	60	3.2	192	0.888	170.5	180
	5	10	8x14	112	2.3	257.6	0.6166	158.84	166.77
	6	10	4x14	56	3.2	179.2	0.6166	110.5	116
	7	12	4x21	84	2.24	188.16	0.888	167.08	175.44
	8	10	4x14	56	1	56	0.6166	34.53	36.3
	9	12	2x20	40	3.7	148	0.888	131.424	138
	10	12	2x20	40	3.7	148	0.888	131.424	138
	11	12	1x22	22	3.8	83.6	0.888	74.23	78
	12	12	1x22	22	3.8	83.6	0.888	74.23	78
	13	8	4x36	144	1.4	201.6	0.4	80.64	84.67
	14	16	4x6	24	8.48	203.52	1.578	321.3	337.35
	15	16	8x6	48	2.8	134.4	1.578	212.08	222.7
	16	8	8x14	112	1.1	123.2	0.4	49.28	51.74

Bar Dia (mm)	Total Length (m)	Weight (kg/m)	Total weight (kg)	Total weight +5% (kg)
8	336.8	0.4	134.72	141.5
10	492.8	0.6166	303.86	319.05
12	1483.36	0.888	1317.22	1383.1
16	337.92	1.579	533.57	560.25
18	4.2	1.998	8.4	8.8

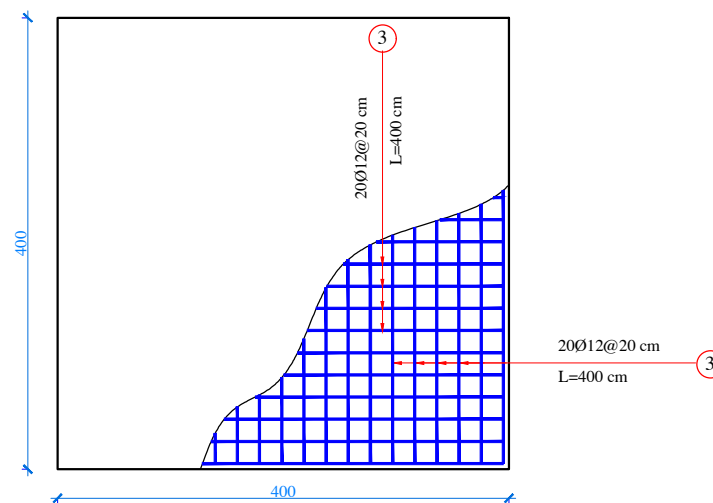
	SURVEYED BY	Eng. M Hashim Omid & Jawid Naseri	CHECKED BY	Eng. M Nasim Yousafzai	SCALE			PROVINCE	Sar e Pol	PROJECT NAME:	water supply network
	DESIGNED BY	Eng. M Hashim Omid	REVIEWED BY	Eng. M Nasim Yousafzai	DATE	31/July/2025		DISTRICT	Sayad & SRP Center	DRAWING TITLE:	Hydraulic system
	DRAWN BY	Eng. M Hashim Omid	APPROVED BY	Eng. M Nasim Yousafzai	DRAWING NO			VILLAGE	Sayad & SRP Center		

Trench Detail for Pipes Excavation and Backfilling

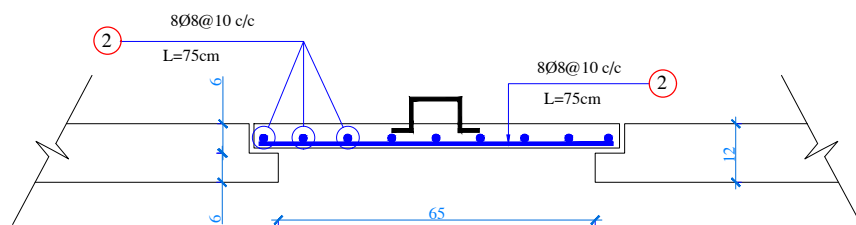




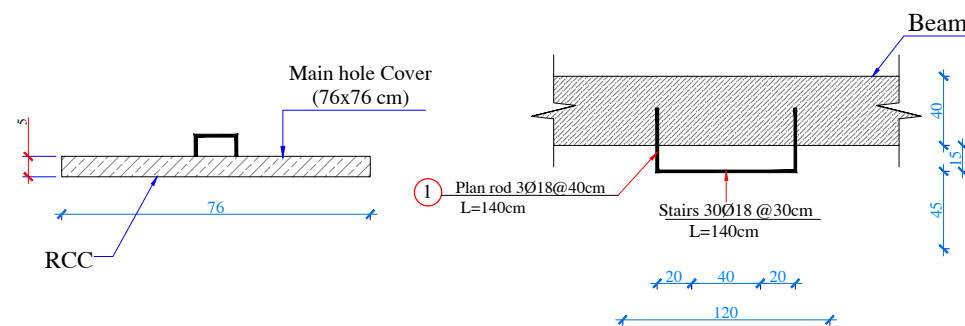
Plan



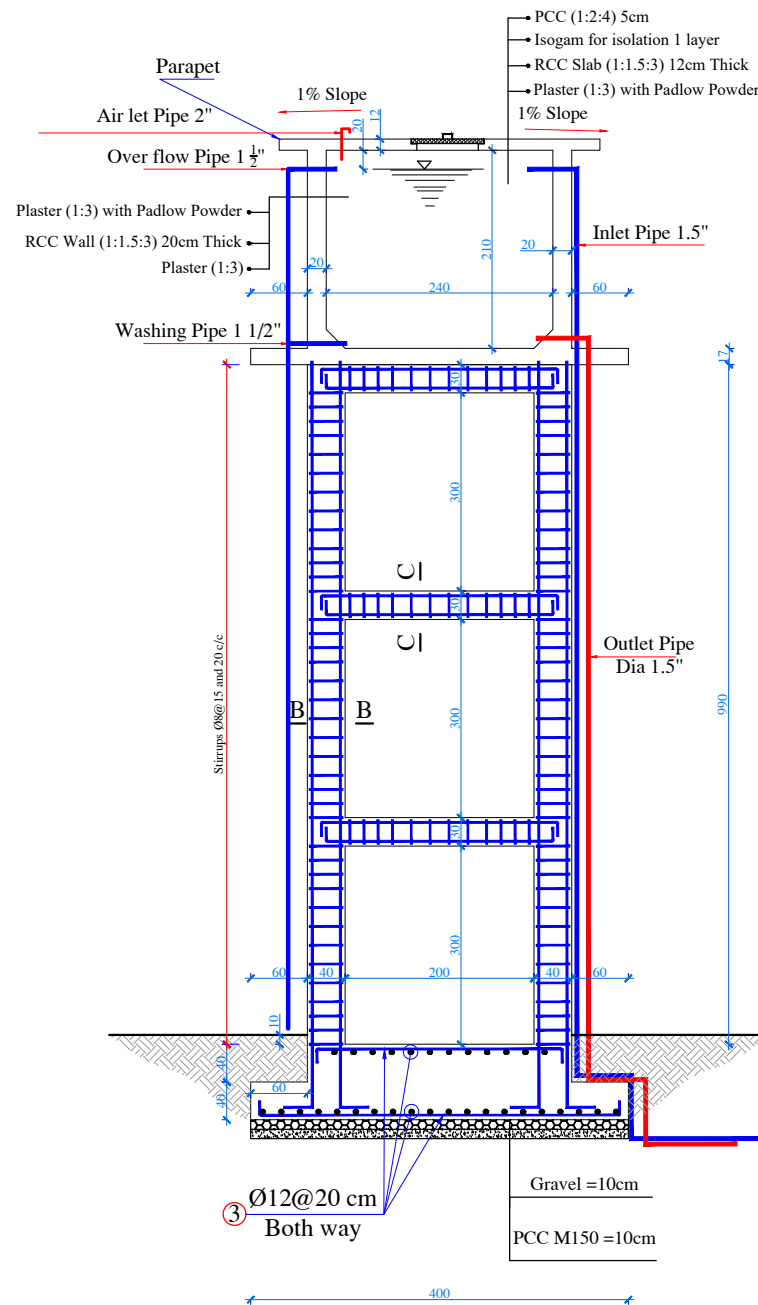
Reinforcement Plan of Footing



Section H-H



Detail -1



SURVEYED BY Eng. M Hashim Omid & Jawid Naseri
 DESIGNED BY Eng. M Hashim Omid
 DRAWN BY Eng. M Hashim Omid

CHECKED BY Eng. M Nasim Yousafzai
 REVIEWED BY Eng. M Nasim Yousafzai
 APPROVED BY Eng. M Nasim Yousafzai

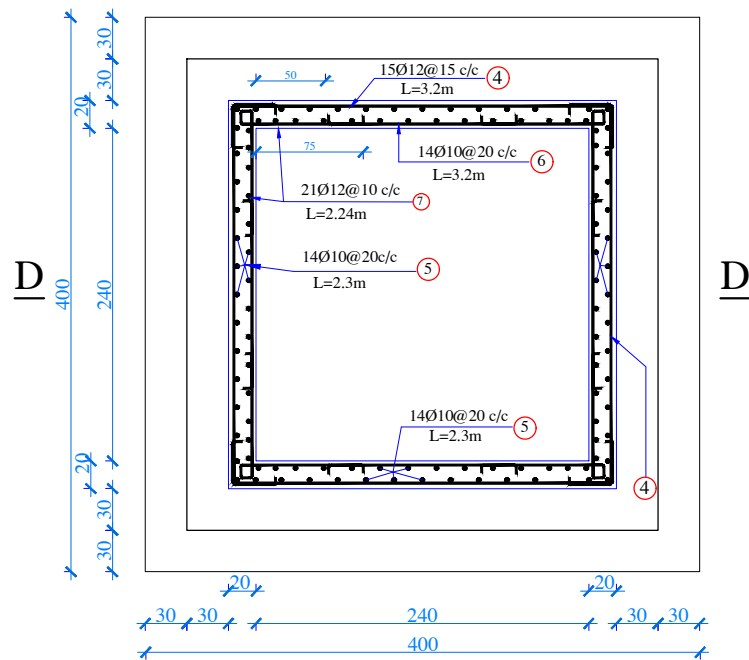
SCALE
 DATE 25/March/2026
 DRAWING NO

SHEET NO

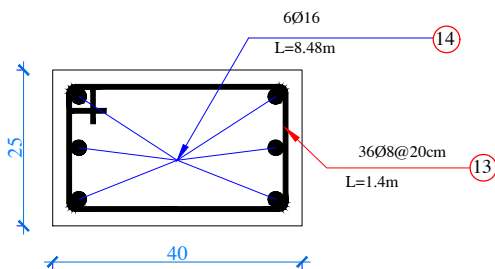
4/5

PROVINCE Sar e Pol
 DISTRICT Sayad and SRP Center
 VILLAGE Sayad and SRP Center

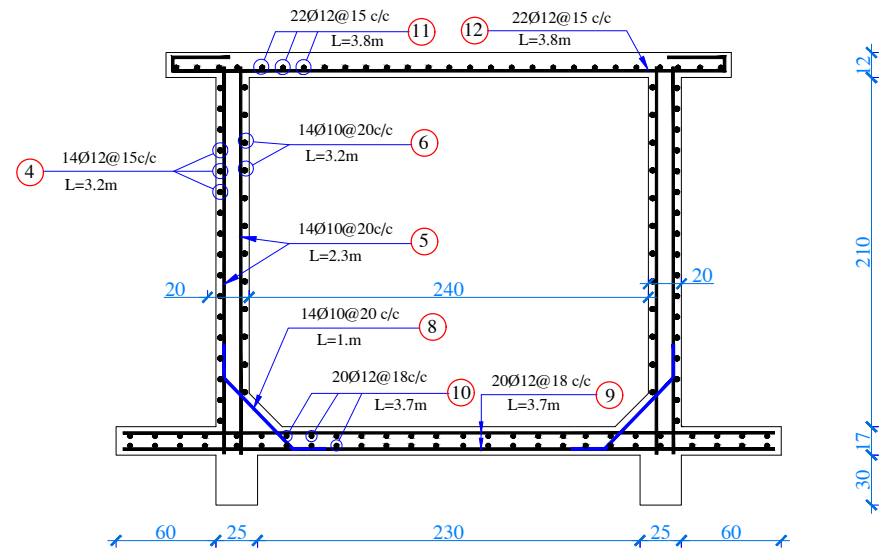
PROJECT NAME: water supply network
 DRAWING TITLE: Hydraulic system



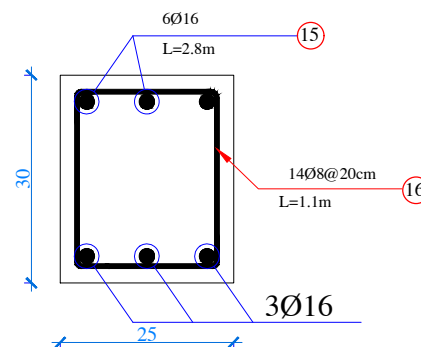
Reinforcement Plan of Water Tank



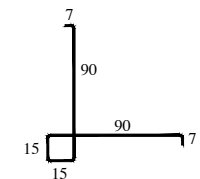
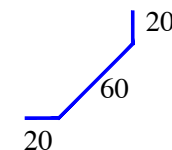
Section B-B



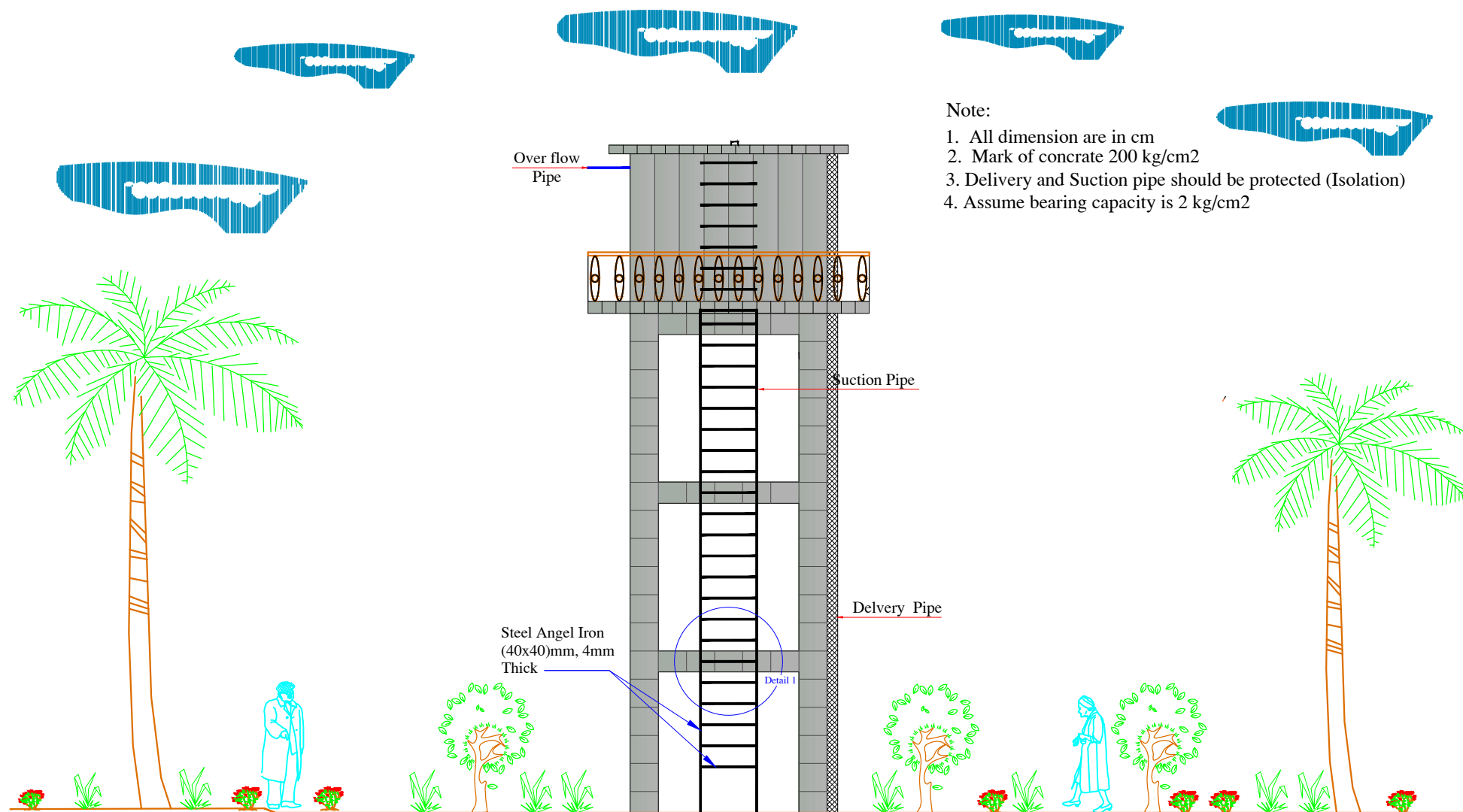
Section D-D



Section C-C

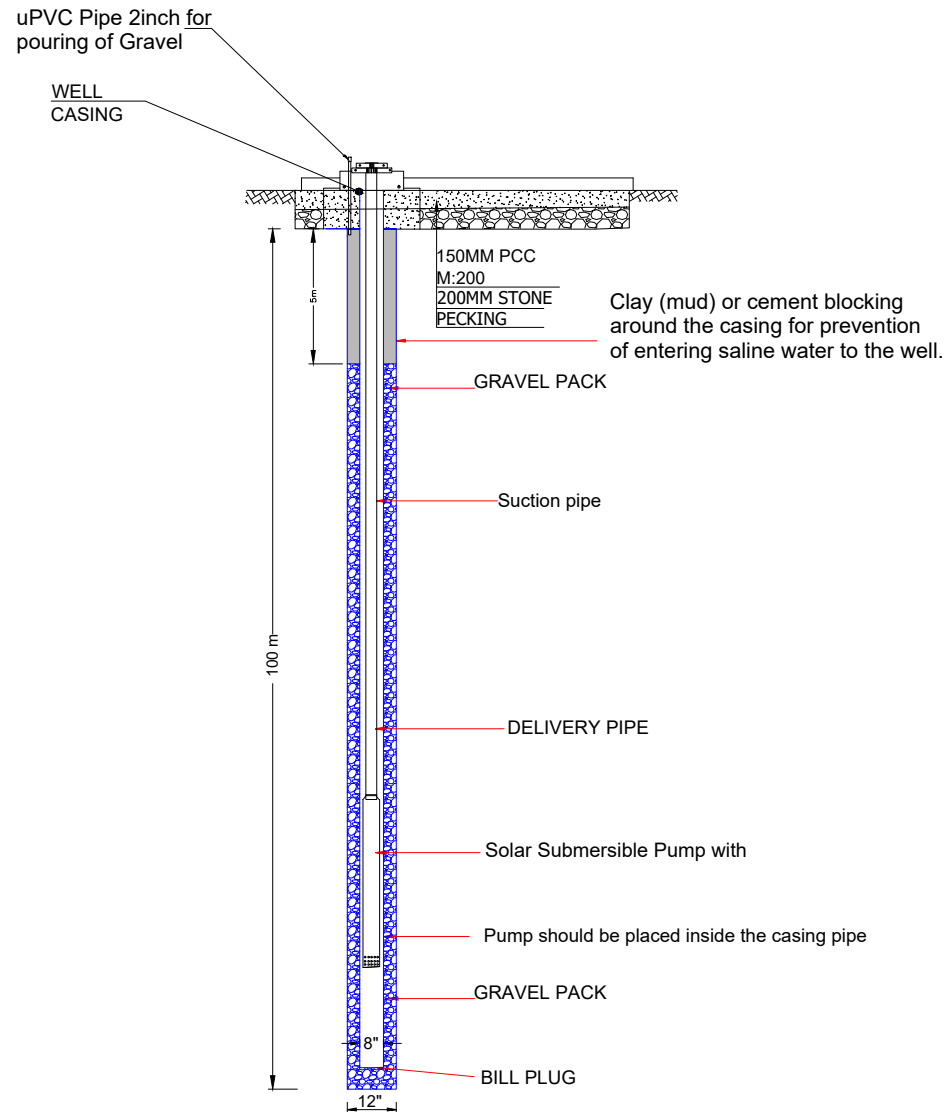


Corner Steel bar Ø12@10 c/c
L=224cm



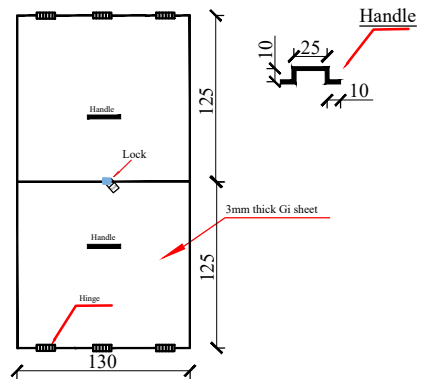
Elevation of Water Tank Tower

WELL SECTION

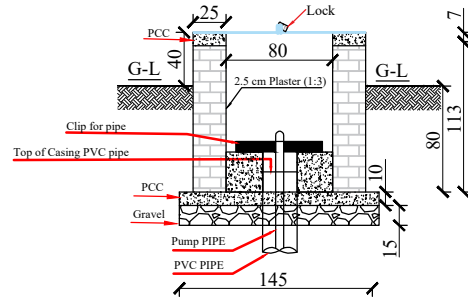


Design of well Protection Box

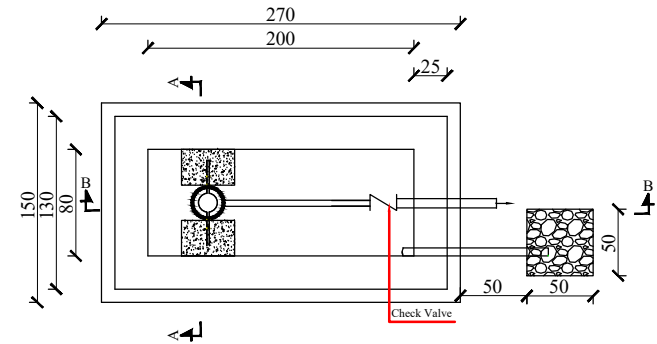
Plan of slab 3mm Iron Sheet



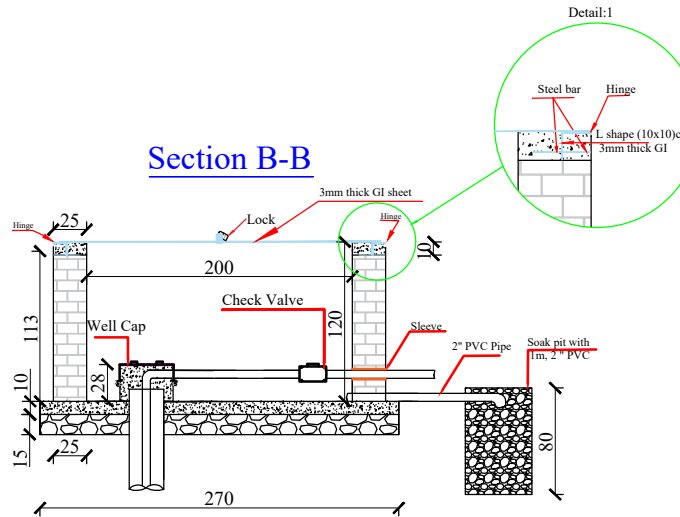
Section A-A




Plan of Well Protection .



Section B-B



SURVEYED BY	Eng. M Hashim Omid and Jawid Naseri	CHECKED BY	Eng. Mohammad Nasim Yusufzai	SCALE		SHEET NO 	PROVINCE	Sar e Pol	PROJECT NAME:	<i>water supply network</i>
DESIGNED BY	Eng. Mohammad Hashim Omid	REVIEWED BY	Eng. Mohammad Nasem Yusufzai	DATE	25/March/2026		DISTRICT	Sayad and SRP Center		
DRAWN BY	Eng. Mohammad Hashim Omid	APPROVED BY	Eng. Mohammad Nasim Yusufzai	DRAWING NO			VILLAGE	Sayad and SRP Center	DRAWING TITLE:	Hydraulic system